

DATE

ADDRESS

Dear Neighbour,

New housing for 51A Alfred Street & 186 Church Street

Kāinga Ora wrote in June 2022 about our intentions to redevelop our land at 51A Alfred Street & 186 Church Street. We now write to advise a resource consent application has been lodged with Auckland Council.

Kāinga Ora has a large number of sites where we have old homes sitting on under-utilised large sections. Our intention is to better utilise these sections by building a greater variety of new, warm, dry homes, designed to complement the local environment and meet the needs of today's tenants.

The land is zoned Terraced Housing and Apartments: This zone provides for urban residential living in the form of terraced housing and apartments of between five and seven storeys.

The development will have space for 4 x carparks and 4 x universal carparks, 30 x bike parks, 2 visitor bike parks and 1 x mobility scooter park provided. For lifestyle and financial reasons, many of our tenants may choose to use public transport in preference to owning a car.

The proposal involves the development of a senior living, 4-5 storey apartment which will include:

- 29 x one-bedroom units
- 1 x Community Room
- 1 x Meeting Room
- 1 x Drying Room
- 1 x Concierge

The site layout is shown in Figure 1 below. Landscaping is proposed throughout the site as seen in Figure 2. The landscaping plans include planting, surface treatments and fencing.

Keeping in touch

As neighbours in the area, it is important to us that you are kept up to date with what is happening as this development progresses.

For more information on the Auckland Housing Programme, please visit our website at [Small to medium-scale developments :: Kāinga Ora – Homes and Communities \(kaingaora.govt.nz\)](http://www.kaingaora.govt.nz/small-to-medium-scale-developments)

In the meantime, if you have any questions or feedback, please contact me on the details below.

Kind regards,

Central and East
Community Engagement and Partnerships
Kāinga Ora – Homes and Communities
Email: centraleastakl.region@kaingaora.govt.nz
Telephone: 0800 801 601

Figure 1: Site Plan

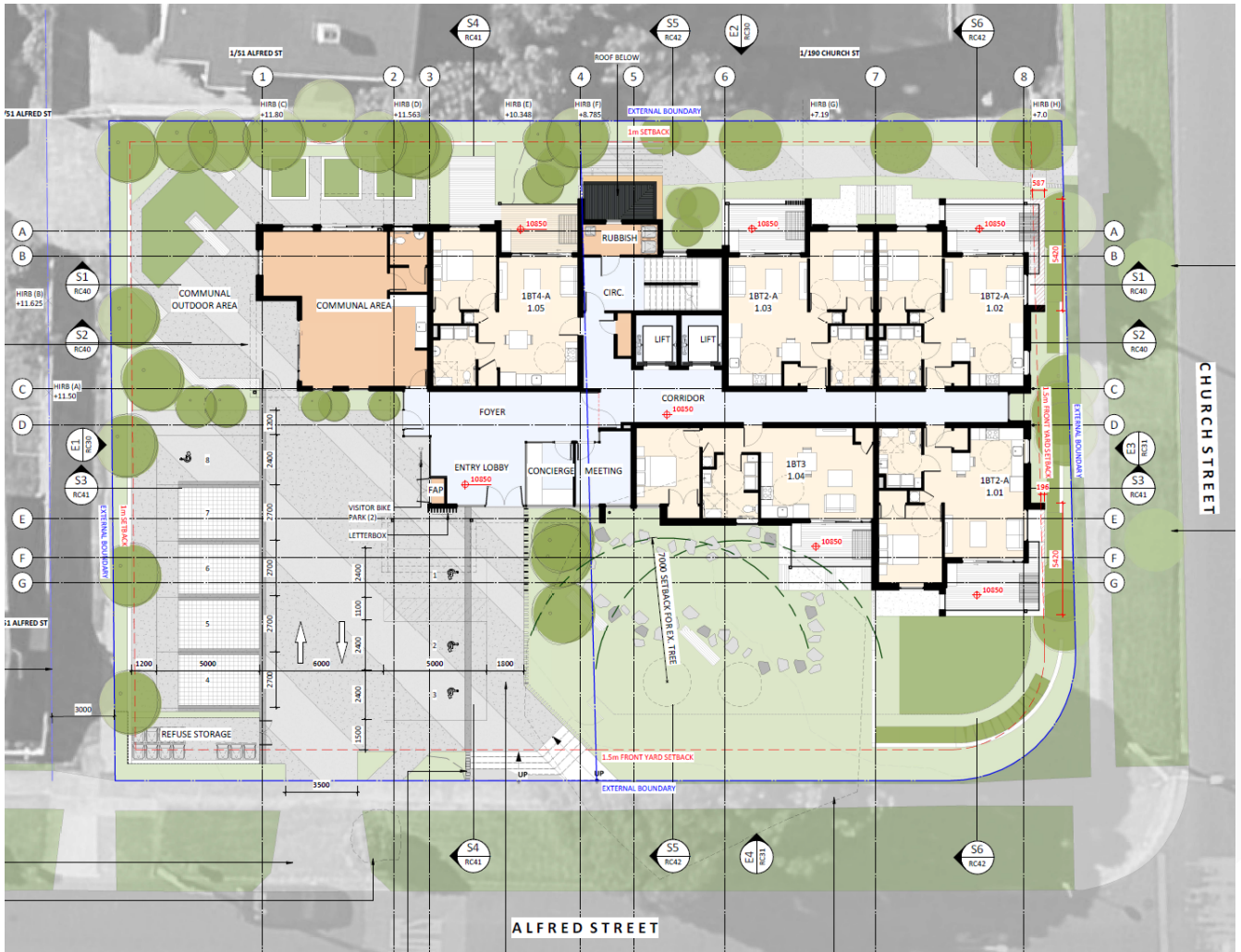


Figure 2: Landscape Plan

Note: The existing Pohutukawa tree remains and the ground beneath remains unaltered.

